

Think Like an EcoSystem: Cognition + Affect = Effect

Marda Kirn
EcoArts Connections

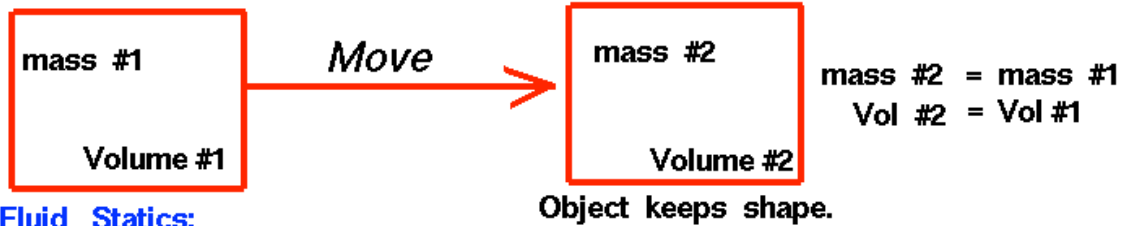
BECC Conference
November 19, 2013



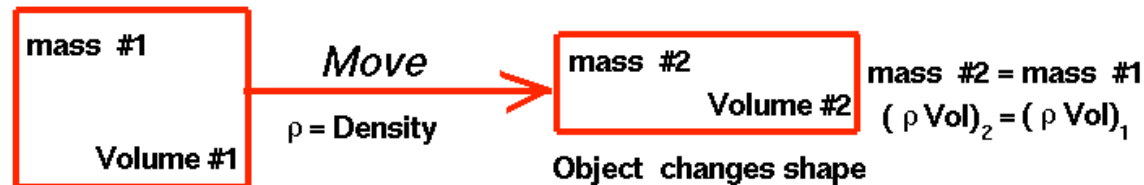
Conservation of Mass

Glenn
Research
Center

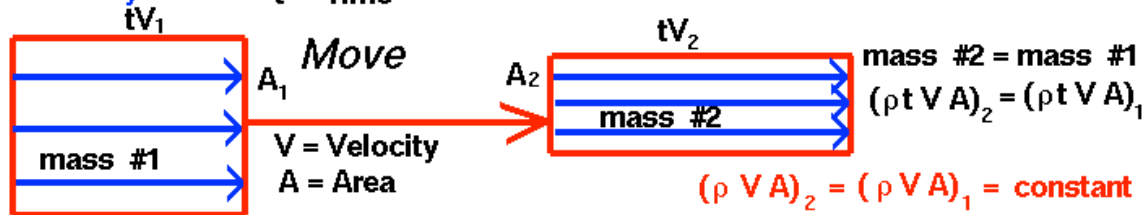
Solid Mechanics:



Fluid Statics:



Fluid Dynamics:



Slide source: Tim Butler, Director of the Center for Urban Ecology
Butler University, Indianapolis



Levitated Mass by artist Michael Heizer

Slide source: Tim Carter, Butler University

EcoArts2006

July 6-16



PERFORMANCES EXHIBITS TALKS TOURS



PROGRAM HIGHLIGHTS: **PERFORMANCES:** Colorado Shakespeare Festival "The Tempest" July 6, 13, 14 • Colorado Music Festival: The Kronos Quartet July 11, Symphonic Music July 13-14 • Eiko & Koma in Denver July 8, in Boulder July 14-15 **EXHIBITS:** Museum of Contemporary Art/Denver Creative Acts That Matter: The Environment; North, South, East, West: 360° of Climate Change • National Center for Atmospheric Research: Climate Discovery **TALKS:** SOLAR 2006 Conference July 8-13 • Boulder Museum of Contemporary Art: Hollywood & Climate Change July 7, Climate Change in Boulder County July 8 • NCAR: Creeping Environmental Problems: What Can We Do? July 12 **TOURS:** Eco-Cycle Recycling Center July 7 • ReSource Building Materials Sales Yard July 7 & 15 Thorne Ecological Institute: Sombrero Marsh July 7 • Valmont Station Coal-Fired Plant July 7 & 15 **AND MUCH MUCH MORE**

www.ecoartsonline.org for a full schedule of events **303.325.5637**

The Compton Foundation
Our Anonymous Angel



WESTAF



Roche Colorado
SUPPORT FOR THE ARTS

D.A.I.R.Y



JAMES
CAMERON

BOULDER WEEKLY

climate challenge

EcoArts gathers artists

and scientists to

spark dialogue

on global warming

by **Grace Hood**

Wayne's Word

Lafayette leaders tell
anonymous whiners
to eat it

Buzz

Chautauqua
releases a
historic album

Cuisine

A pilgrimage to
the Taj
thrills the palate

Elevation

Teams prep for the
toughest race of
their lives

ecoarts

SEPT 14 - OCT 6
2007



**OVER 25 MAJOR
SCIENCE,
ENVIRONMENTAL,
ARTS, INDIGENOUS,
AND OTHER
ORGANIZATIONS
PRESENTING EXHIBITS,
PERFORMANCES,
TALKS, TOURS,
FEASTS, FAIRS, FILMS
AND MORE!**



COLLABORATORS — BAKSUN BOOKS • BOULDER COUNTY ARTS ALLIANCE • BOULDER CULINARY GARDENERS • BOULDER COUNTY GOING LOCAL • BOULDER MUSEUM OF CONTEMPORARY ART • BOULDER PUBLIC LIBRARY • CENTER FOR RESOURCE CONSERVATION • CITY OF BOULDER OFFICE OF ENVIRONMENTAL AFFAIRS • COLORADO RENEWABLE ENERGY SOCIETY • CIRES • CURIOUS THEATRE • DAIRY CENTER FOR THE ARTS • DENVER MUSEUM OF NATURE & SCIENCE • DENVER PUBLIC LIBRARY • GO BOULDER • GROWING GARDENS • ITA • MOTHERS ACTING UP • NCAR • NOAA • NATIVE AMERICAN RIGHTS FUND • ROCKY MOUNTAIN SUSTAINABLE LIVING FAIR • UNIVERSITY OF COLORADO: ARTIST SERIES, ATLAS CENTER FOR ARTS, MEDIA, AND PERFORMANCE, EESI, FISKE PLANETARIUM, MUSEUM OF NATURAL HISTORY, UNIVERSITY LIBRARIES, VISITING ARTIST LECTURE SERIES

www.ecoartsonline.org

303.449.2128

The Compton Foundation
Our Anonymous Angel Ms. Anonymous



The Big Question

Why is it that so many people know
about climate change
and sustainable solutions

but so few people
are doing anything about them?

RESEARCH

- Carleton College. Student motivations and attitudes: The role of the affective domain in geoscience learning. 2010 <http://serc.carleton.edu/NAGTWorkshops/affective/index.html>.
- Center for Research on Environmental Decisions. 2009. *The psychology of climate change communication: A guide for scientists, journalists, educators, political aids, and the interested public*, ed. A. Cimino. New York: Columbia University.
- Kahan, D. 2010. Fixing the communications failure. *NATURE* 463, 296-297.
- Leiserowitz, A. 2006. Climate change risk perception and policy preferences: The role of affect, imagery, and values. *Climatic Change* 77 (1-2): 45-72.
- Moser, S. C., and L. Dilling, eds. 2007. *Creating a climate for change: Communicating climate change and facilitating social change*. New York: Cambridge University Press.
- Pooley, J. A., and M. O' Connor. 2000. Environmental education and attitudes: Emotions and beliefs are what is needed. *Environment and Behavior* 32 (5): 711-23.
- Singhal, A., M. Cody, E. Rogers, and M. Sabido, eds. 2004. *Entertainment-education and social change: History, research, and practice*. Oxford: Lawrence Erlbaum Associates.

The Psychology of Climate Change Communication

**A Guide for Scientists, Journalists,
Educators, Political Aides,
and the Interested Public**



Center for Research on
Environmental Decisions

Cognition + Affect = Effect

Cognition + Affect = Effect

Mind

Intellect

Facts

Reasoning

Analysis

Heart

Emotions

Feelings

Attitudes

Beliefs



History of Art & History of Science

The Arts & Religion



The Arts & Advertising



The Arts & Education Entertainment



The Arts Inspiring Political Change





THE JUNGLE

UPTON SINCLAIR





The Brain: Two Information Processing Systems*

Analytic

- Logical
- Deliberative
- Perceives reality in abstract symbols, words, numbers
- Rules and algorithms need to be learned – does not happen automatically

Examples

- Numerical statistics in tables, figures, graphs, charts

* “The Psychology of Climate Change Communication,” Center for Research on Environmental Decisions, Earth Institute, Columbia University

Experiential

- Holistic
- Intuitive
- Emotion-driven (fear, dread, anxiety)
- Perceives reality in concrete images and narratives, linked in associations
- Operates automatically and without any training

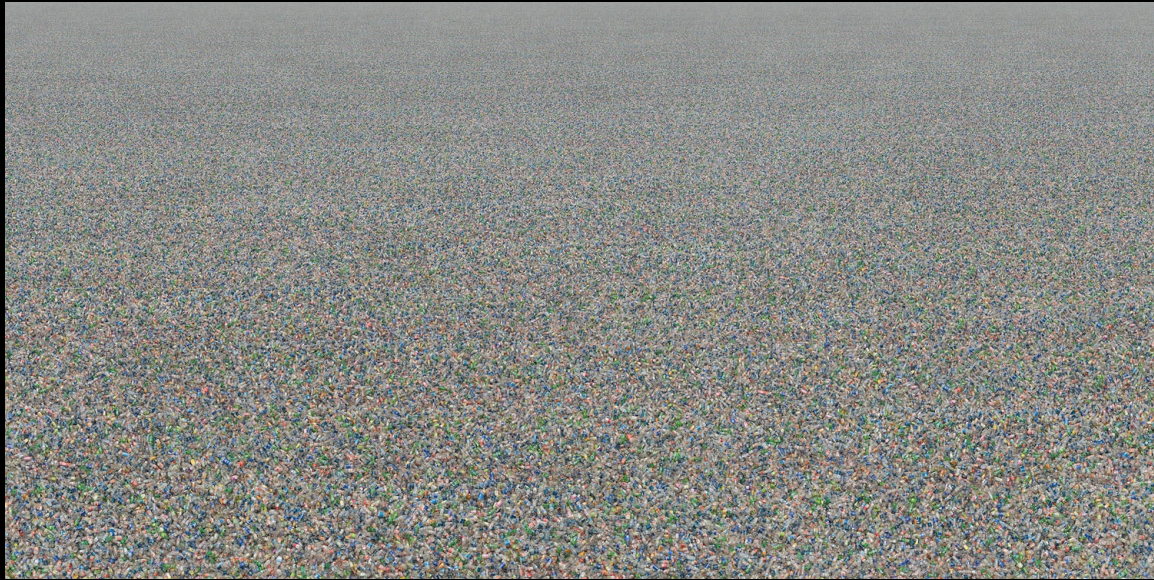
Examples

- Images or stories
- Emotionally charged and vivid

*Fixing the Communications Failure**

- Community
- Equality
- Egalitarian and communitarian values
- Suspicious of commerce and industry
- Believe environmental risks should be restricted
- Trust brown-haired bearded male in a denim shirt
- Individualism
- Authority
- Hierarchical values
- Prize personal initiative
- Admire commerce and industry
- Dismiss evidence of environmental risks
- Trust grey-haired male in a suit

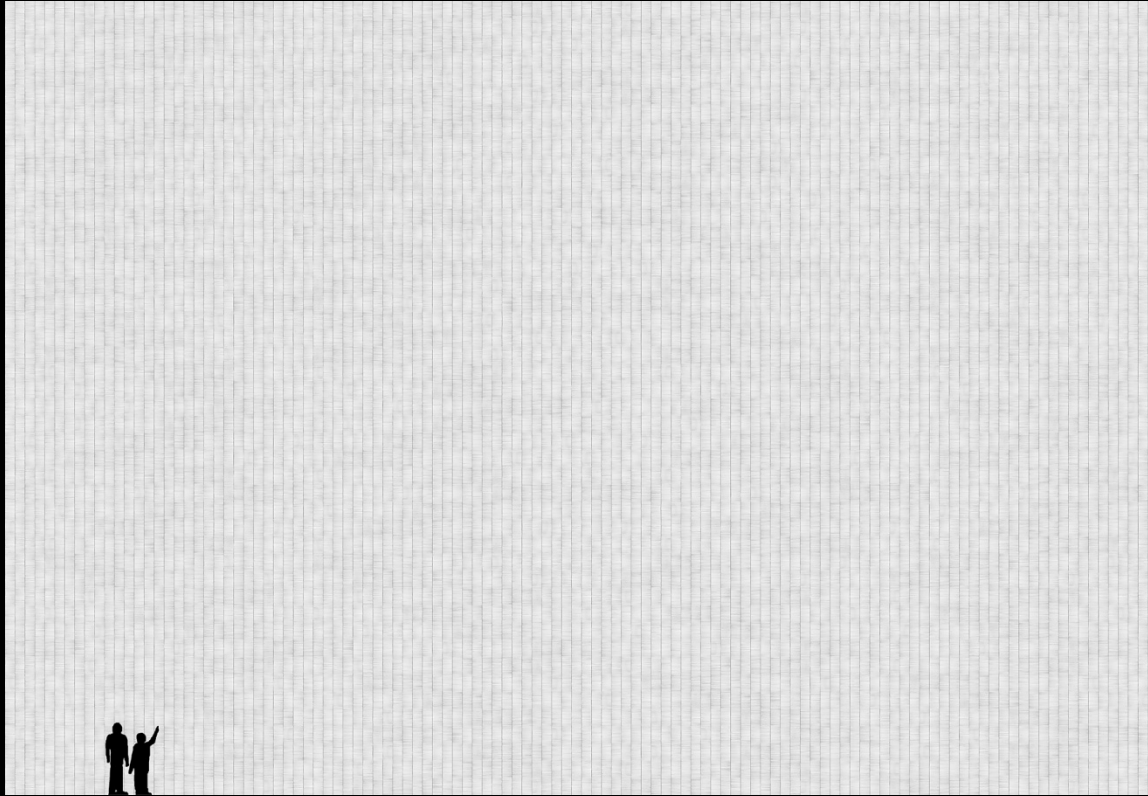
*Dan Kahan, *Nature*, Vol 463, 21 January, 2010



Source: Chris Jordan www.chrisjordan.com



Source: Chris Jordan www.chrisjordan.com



Source: Chris Jordan www.chrisjordan.com



Source: Kim Abeles www.kimabeles.com



Presidential Commemoration Smog Plate Series

Source: Kim Abeles www.greenmuseum.org, www.kimabeles.com

Detail of Smog Collector Sculpture (Sixty Days of Smog)
gathering smog at California State University, Fullerton.



Smog Collectors Sculpture (Sixty Days of Smog), 1991-92. Welded vehicle exhaust systems, bilingual text, images made of particulate matter (smog) on plexiglass gathered at California State University, Fullerton. Funded by the California Bureau of Automotive Repair, Department of Consumer Affairs.

Informative "table" accompanying each *Smog Collector Sculpture (Sixty Days of Smog)* while it was on-site gathering smog, and during the extensive tour of the completed works to businesses and organizations throughout southern California.

On-site Smog Collector Sculpture Project. In 1991, the California Bureau of Automotive Repair, Department of Consumer Affairs sponsored on-site *Smog Collector Sculptures* by Abeles as a unique campaign to inform citizens about the Smog Check Program and facts about smog. Midway through the project, February 1992, the media's support for the campaign was said to be unprecedented, reaching 30 million people and a total dollar equivalent media value of close to \$3 million. The completed sculptures toured to forty corporations and agencies during 1992, primarily to encourage participation in rideshare programs and use of mass transit. In 1992, Abeles received a Clean Air Award from the South Coast Air Quality Management District (AQMD) for this project.

The *Smog Collector Sculptures* were created from recycled automobile mufflers and catalytic converters, each holding a cut stencil image on plexiglass. Placed in the environment, visitors to the sites saw the accumulation of particulate matter deposited by the polluted air onto the stencils. For each sculpture, Abeles created an accompanying informative "table" using visuals and text in English and Spanish to describe solutions for cleaner air. The table displays were an effort to empower the audience with facts and phone numbers for further information. After eight weeks, the stencils were removed from each sculpture, revealing the images made of smog: lungs, heart, cityscape, artery system, tree, automobile engine, and a wheel of walking legs.



The Storm

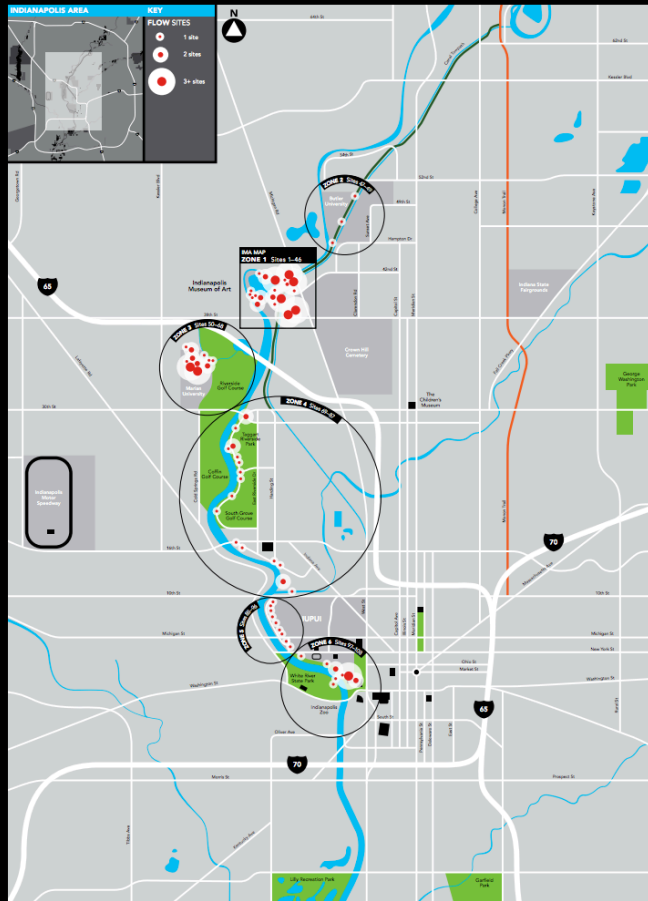
Source: John Flax, Theater Grottesco www.theatergrottesco.org

**CITY
AS
LIVING
LABORATORY**

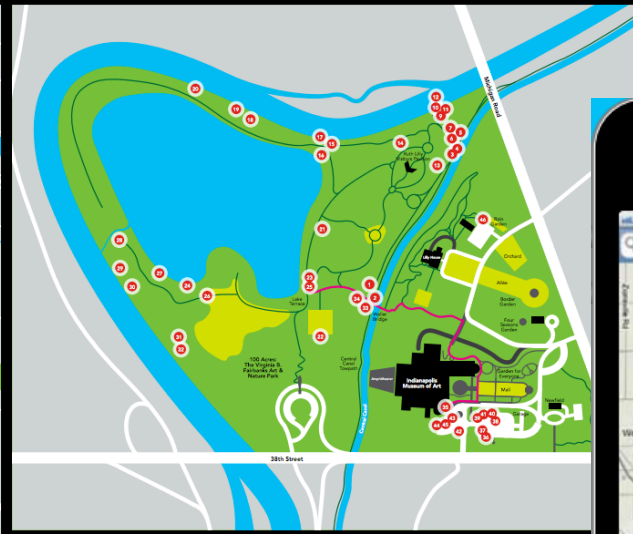
**FLOW: CAN YOU
SEE THE RIVER?**

“FLOW” and the “Raindrop” App

FLOW INDIANAPOLIS MAP



IMA MAP ZONE 1 Sites 1-46



FLOW: CAN YOU SEE THE RIVER?

OVER 100 SITES

There are more than 100 markers scattered throughout the IMA's grounds and over 100 miles of land and water around the city of Indianapolis. The markers can be found in the following zones (based on the map):

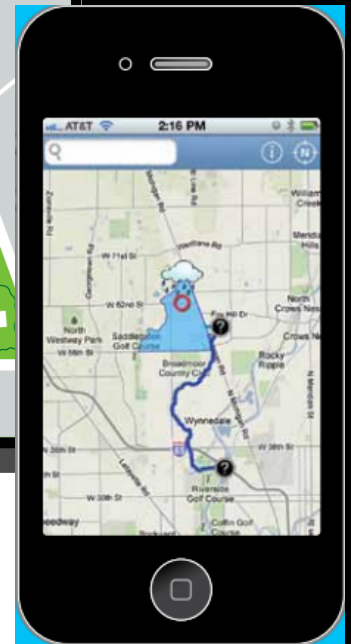
- ZONE 1** Indianapolis Museum of Art and 100 Acres: The Virginia B. Fairbanks Art & Nature Park
Sites 1-46
- ZONE 2** Butler University
Sites 47-49
- ZONE 3** Marian Ecolab
Sites 50-68
- ZONE 4** Riverside Park
Sites 69-87
- ZONE 5** IUPUI Arbor
Sites 88-96
- ZONE 6** White River State Park
Sites 97-108

Visit flowappcenterline.org for details about each FLOW site.

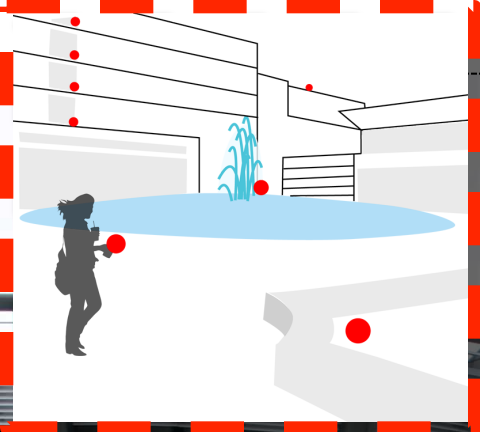
HOW TO EXPERIENCE FLOW

Pick up a map here at the IMA or use the FLOW website to find the mirror markers and oversized red map pins that are located on the museum grounds, in 100 Acres, and along the White River and canal south of Butler University to the White River State Park downtown.

- At each site, the mirror markers will direct your gaze to nearby red map pins that point out key aspects of the water system such as wetlands, floodplains, combined sewer overflows and more. Standing in front of the mirror marker, shift your gaze until the red mark on the mirror lines up with the red pin in the landscape. You will see the water element, its name, and your own reflection in this scene.
- Dial up the guide-by-call phone number found on your mirror marker to hear a detailed description for each of the water elements.







**DYNASTY
AND DIVINITY**
IFE ART IN ANCIENT NIGERIA

July 9 - January 16



54,000+
WORKS IN THE COLLECTION

5,000+
YEARS OF ART

152+
ACRES OF GROUNDS

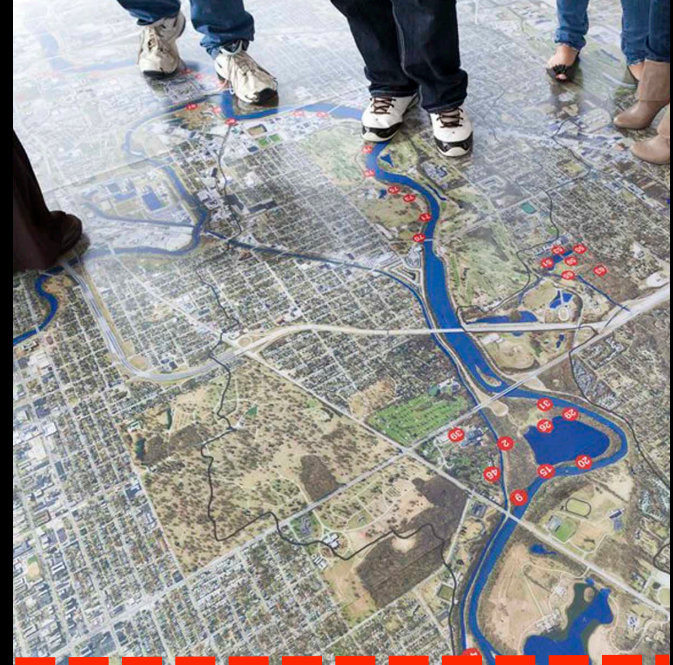
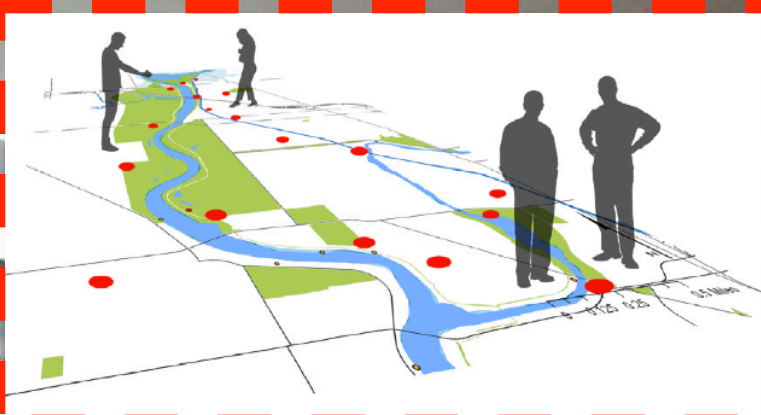
100+
PUBLIC PROGRAMS EVERY YEAR

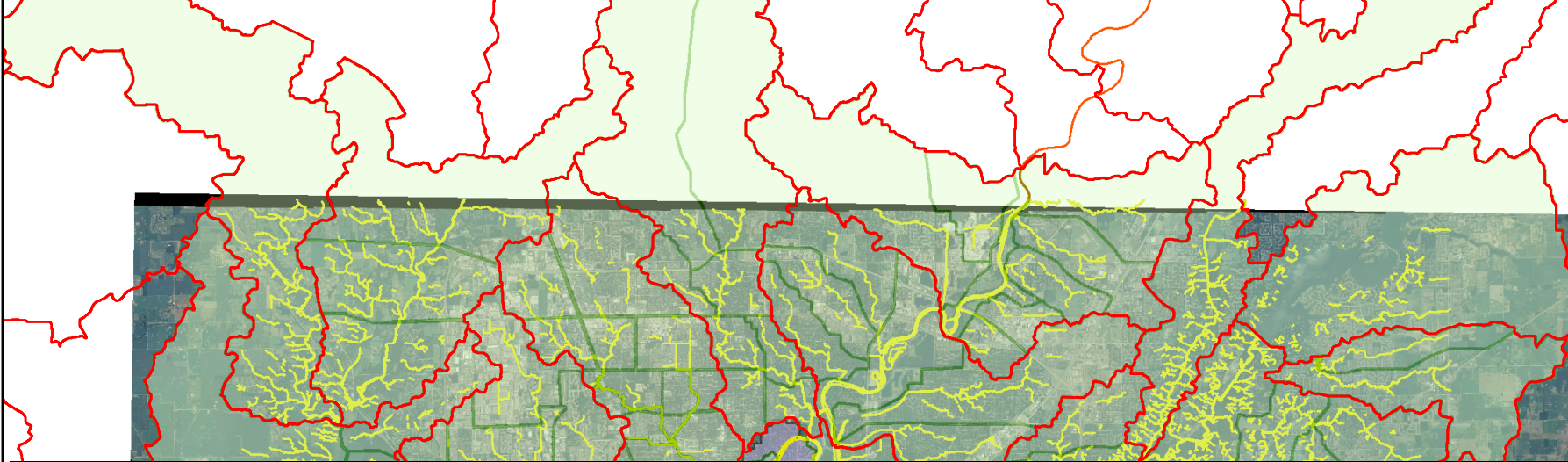
3+
MILES OF HIKING TRAILS

1
PLACE TO SEE IT ALL

**SMITHSONIAN
NATIONAL MUSEUM OF AFRICAN ART**

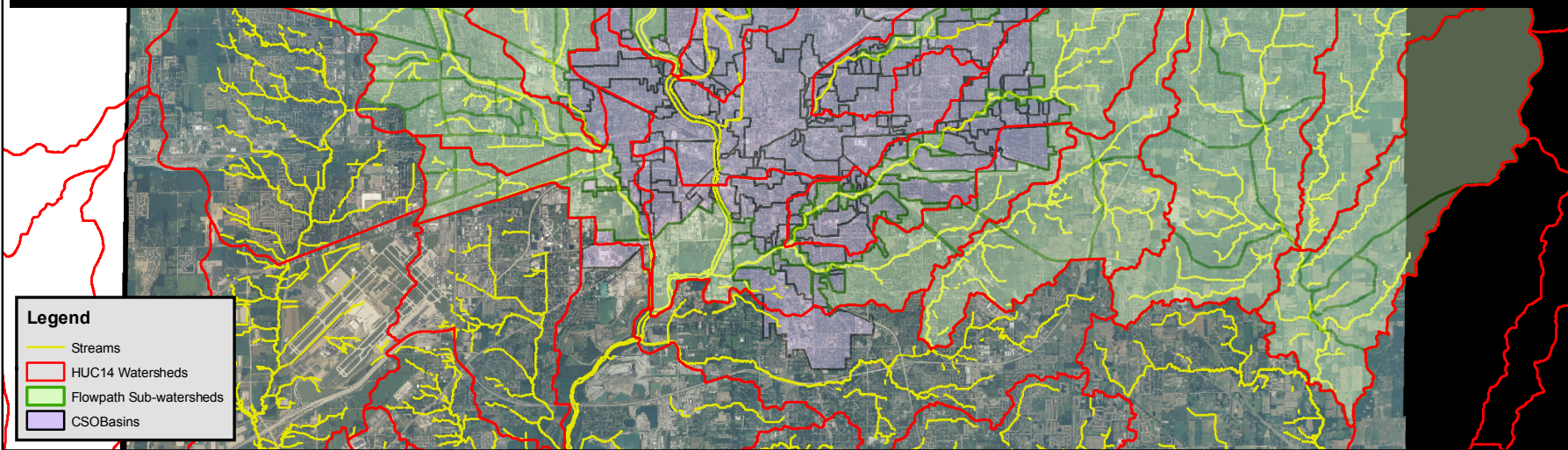
**SMITHSONIAN
NATIONAL MUSEUM OF AFRICAN ART**





WATERSHEDS: HUCs, sewersheds

FLOW PATHS: streams, ditches, sanitary / combined / storm sewer



Legend

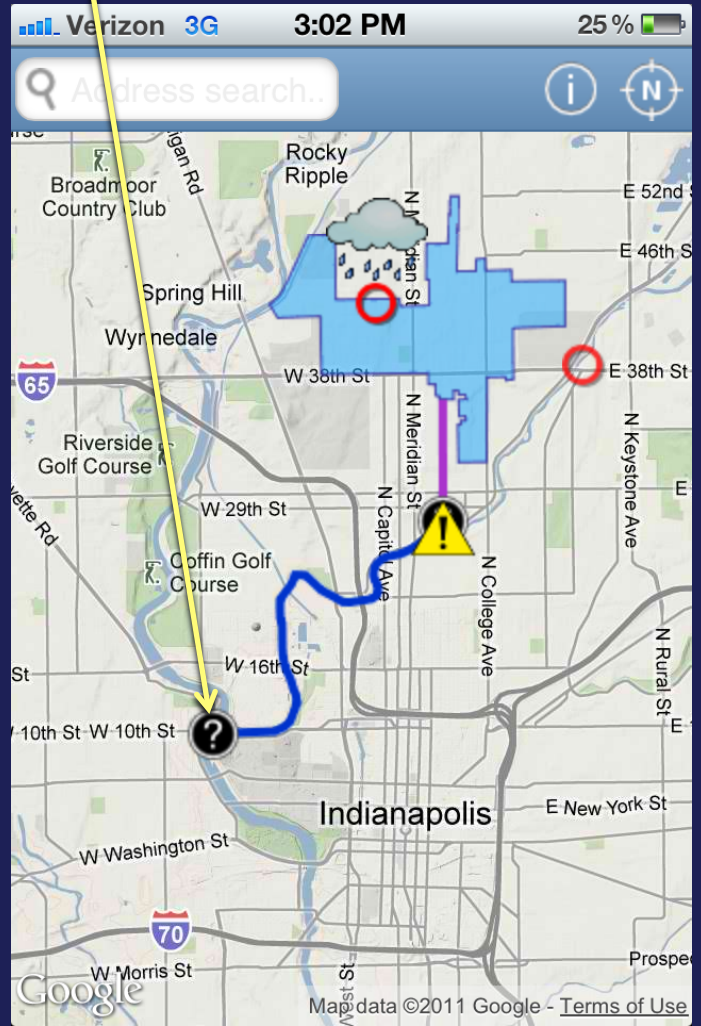
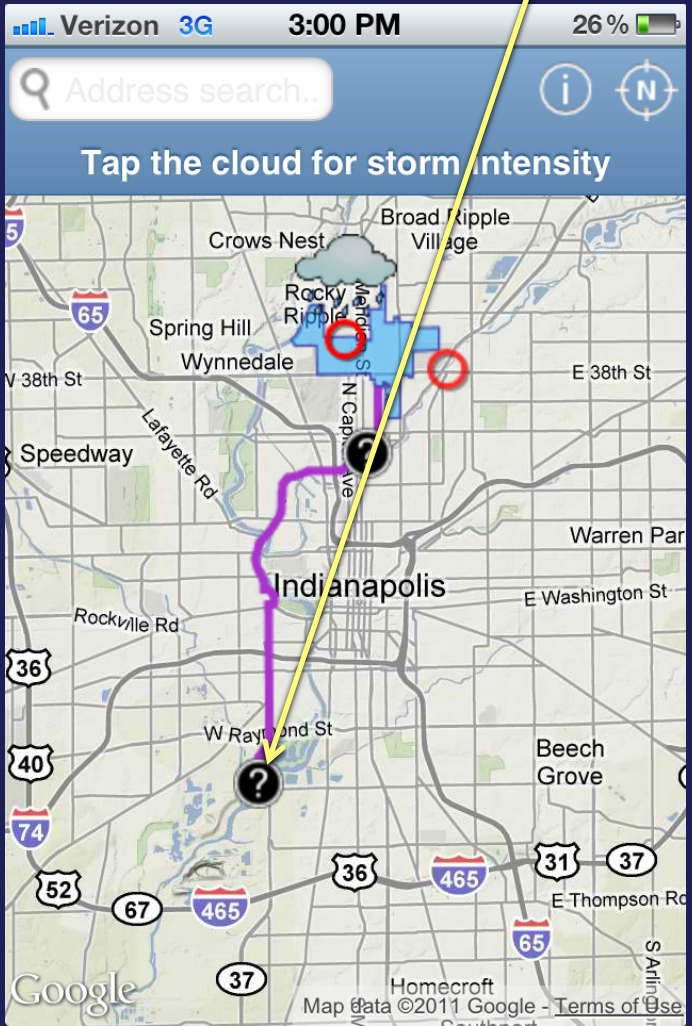
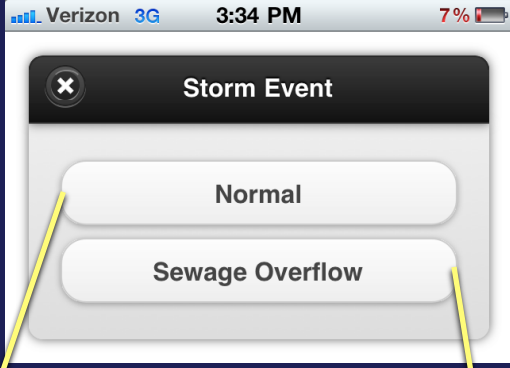
- Streams
- HUC14 Watersheds
- Flowpath Sub-watersheds
- CSOBasins

Address search..



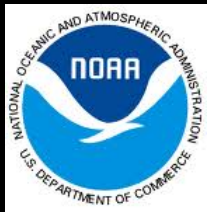
Tap the cloud for storm intensity





www.trackaraindrop.org
www.flowcanyouseetheriver.org
www.ourwaterways.org

www.butler.edu/urban-ecology
Timothy Carter, Ph.D.
tlcarter@gmail.com
317.940.6506



Mary Miss Studio
EcoArts Connections
Indiana State Climate Office



This presentation was prepared by Butler University under award NA10SEC0080027 from the National Oceanic and Atmospheric Administration (NOAA), U.S. Department of Commerce. The statements, findings, conclusions, and recommendations are those of the author(s) and do not necessarily reflect the views of the National Oceanic and Atmospheric Administration (NOAA) or the U.S. Department of Commerce.

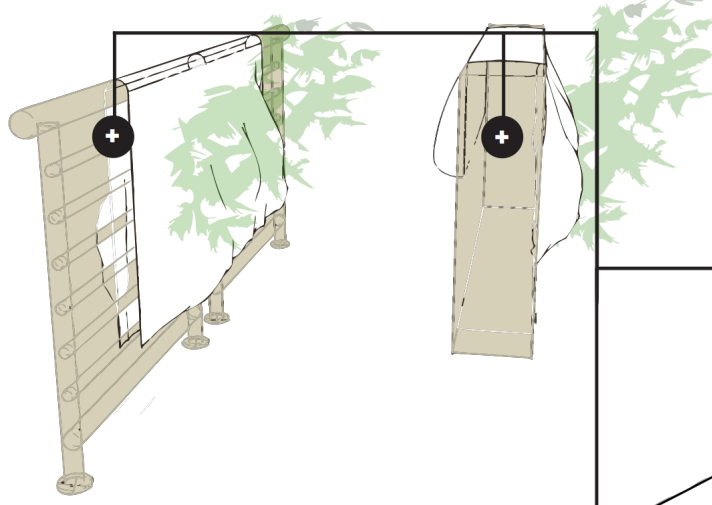


The Arts & Health



xCLINIC – Environmental Health Clinic & Lab

Source: Natalie Jeremijenko www.environmentalhealthclinic.net

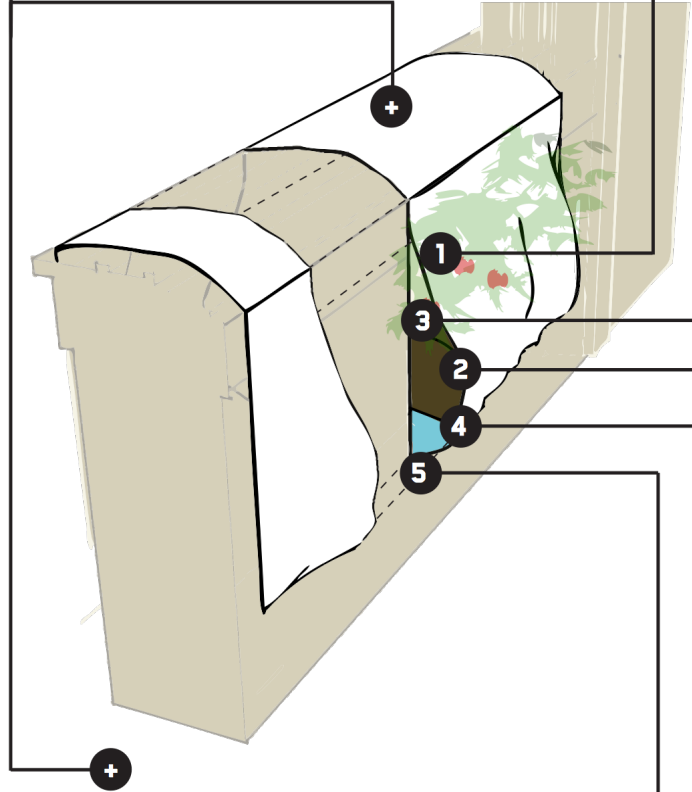


AGBAG FEATURES

HOW IT WORKS TO PROVIDE AN INTENSIFIED AND BIODIVERSIFIED GROWING ENVIRONMENT

SYSTEM CHARACTERISTICS:

- + System minimized root space and maximizes leaf area index via
- + Root to shoot ratio characterization of plants (e.g. vines)
- + Perennial (storing nutrients over winter) --> imp to building interacting pollinators/birds and biodiversity
- + Scaled to be manageable by one or two people; strategy of scaling thru aggregation of small action vs scaling thru tractor/heavy equipment scaling; because urban systems have large number of i-people, whereas rural context defined by low human to plant ratio
- + Scaled to work within safety margins of legacy buildings and building codes
- + Modular / inexpensive / aggregatable / networked agriculture system
- + Using urban structures to access solar resources; (that would not be accessible in 2-d agriculture / community garden); exploits 3-d space filling algorithms; and existing structural investment; coupling
- + Changes the scale (by approx 3 orders of magnitude) of what is possible in urban agricultural context



GENERAL SYSTEM NOTES

- + Tyvek / air permeable water proof and high tensile
- + Puncture resistant
- + Upcycled material (theoretically)
- + Single HDPE material, no leaching, no binders
- + Using counter balancing for safe non destructive fastening that can be added to any railing, double hung window, parapet or existing structure
- + Load bearing on railings (mass is less than a person)
- + White titanium dioxide acts photocatalyzes the breakdown of common urban air pollutants NOx SOx

1 FOILAGE EXPOSED TO REFLECTED AND DIRECT SOLAR

- + Tyvek reflects valuable blue spectrum to plants
- + Tyvek provides printable surface for in situ notes and observation capture
- + Brinno camera based data collection on growth responses; high fidelity data from participatory research context

2

AIR SOIL LAYER

- The tyvek material provides moisture barrier for loss of water thru air soil layer ... retains moisture and simulates and supports green mulching, provides habitat for snails and other leaf litter inhabitants
- + Tuxury snail housing for snails: soil indicators; vertical grazing
 - + Easy access for incorporating food scraps and cellulosic waste
 - + Can also support modest vermiculture

3

RHIZOMIC SPHERE/ROOT LAYER

- + Because of breathable fabric oxygenated soil is spread around the bag surface rather than just on top in traditional planter agbag has more root space for close companionship
- + show air permeability oxygenated depth from the surface of the bag; ~ 1-2"
- + variable soil conditions

4

MEMBRANE BT WATER RESEVOIR AND SOIL

- + To control soil moisture and wetting rate
- + 2 x parameters of control
- + Attenuates wicking connection to soil thru surface area
- + Controlling polymer moisture release rate to soil
- + Can design different soil conditions [wetland/marsh agriculture to highly drained ...

5

SUB IRRIGATION SYSTEM

- + (Simulates moisture seepage from large soil banks; damps wet/dry cycle and associated plant stress)
- + Soft and expandable water reservoir
- + Maximizes space use
- + Releases dissolved nutrients to plants; 777 NPK (current) i.e. plants are not nutrient limited despite constrained root space

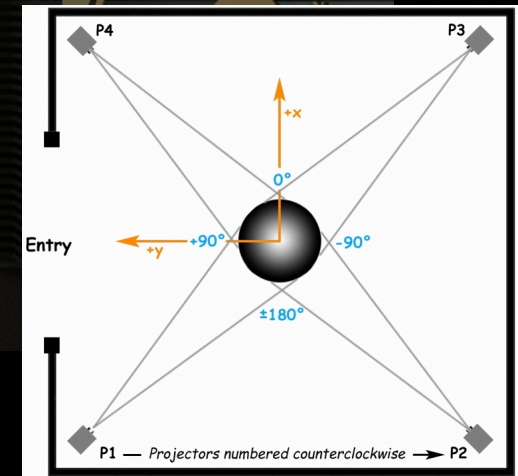








Case Study: NOAA Science On a Sphere® (SOS)





THE ANNOTATED
**UNCLE TOM'S
CABIN**



HARRIET BEECHER STOWE

EDITED WITH AN INTRODUCTION AND NOTES BY

HENRY LOUIS GATES JR.

AND HOLLIS ROBBINS



Thank You!

Artists

Kim Abeles

John Flax, Theater Grottesco

Natalie Jeremijenko, xCLINIC

Chris Jordan

Mary Miss

People/Entities

Tim Carter, Center for Urban Ecology, Butler University

Shilpi Gupta, NOAA